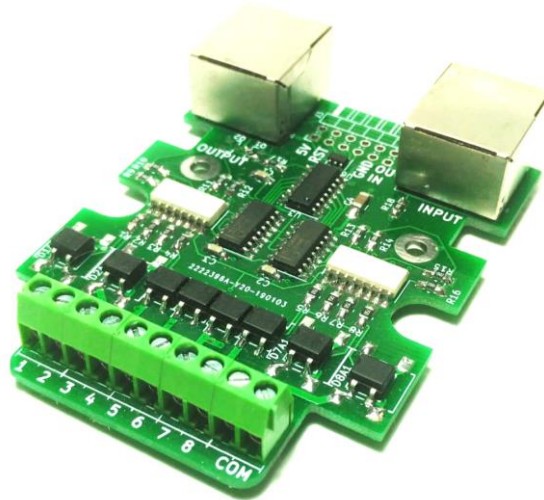




Feedback Decoder

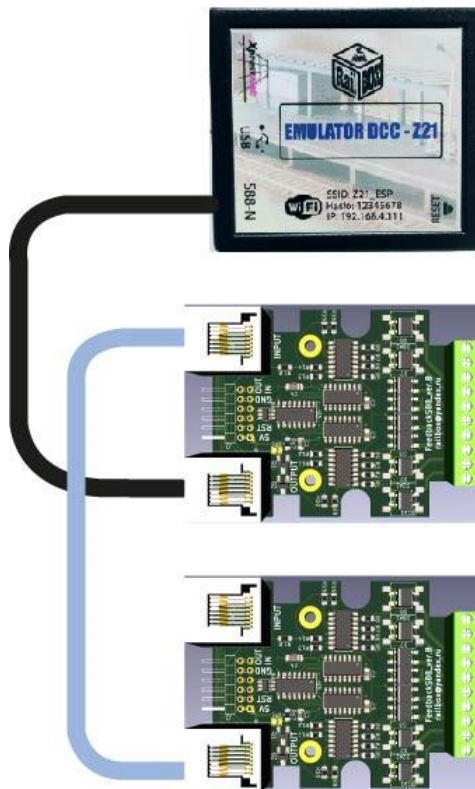


Introduction

This Accessory Decoder designed to get a feedback from the Model Railroad using a Z-21 Emulator.

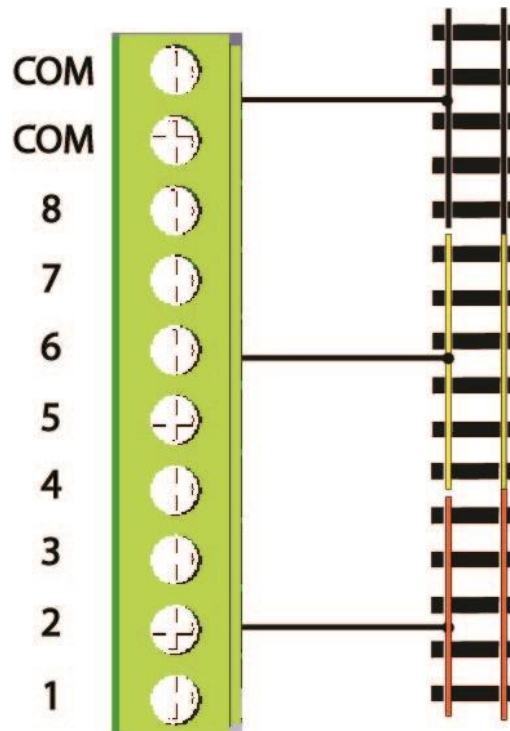
Connection

To make the S88 feedback module working connect it to the Emulator Z21 or another Command station that supports S88-N input. You can also connect up to 31 modules in a chain by using INPUT connection (See picture below). For connecting any Ethernet/LAN RJ45 cable with all 8 wires are suitable.





Connection to the rails



Configuration

If you are connecting module to Z21 emulator, you should enable S88 bus on it to get this module working. See Z21 emulator documentation for details.